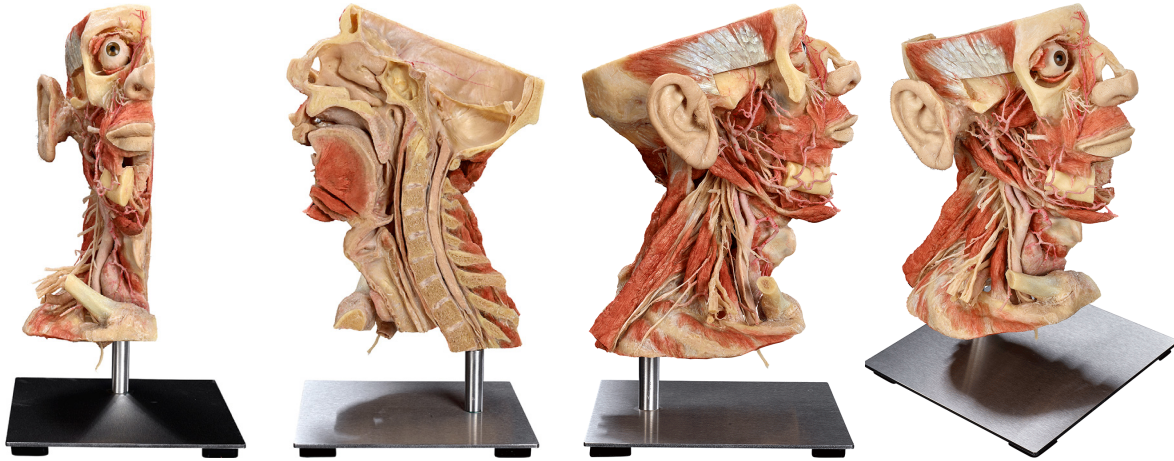


## Silicone Plastinates - Head and Neck - **Half Head Specimen**

---



### Half Head Specimen

HP0201

- cut sagittally
- dissection of the external carotid artery and its branches
- orbital cavity
- from the front
- lateral wall of the cranial cavity has been partly removed as well as the zygomatic arch and the mandible
- includes whole neck and 1st rib
- stand included

