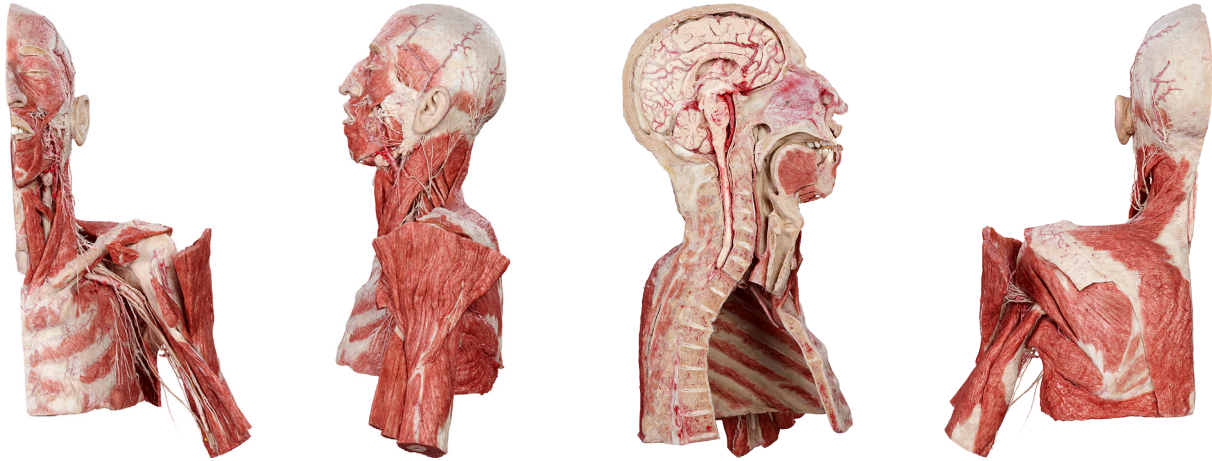


## Silicone Plastinates - Head and Neck - **Shoulder and Axilla Specimen**

---



### **Half Head an Neck, Shoulder and Axilla Specimen**

HP0208

- cut sagittally, brain sagittally bisected
- superficial dissection
- head displays the muscles of facial expressions, vessels, nerves and the salivary glands
- neck shows the structures within its triangles
- sagittal section of the upper part of thoracic wall up to the 3rd rib and T6
- dissection of the upper girdle
- dissection of the cervical and brachial plexus
- dissection of the vessels and nerves of the axilla
- stand included

