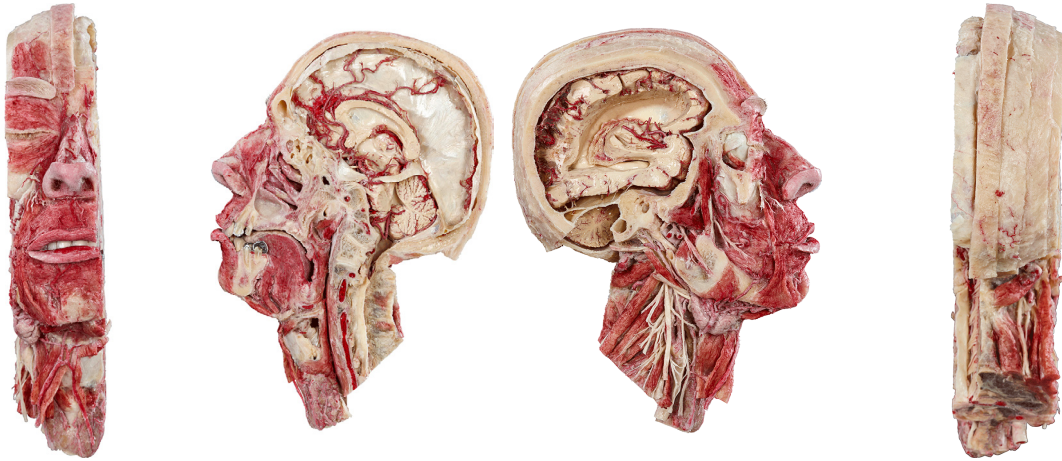




Silicone Plastinates - Head and Neck - **Head and Neck Specimen**



Head and Neck Specimen (CSF Flow)

HP0306

- parasagittal section of the head and neck
- dissection of the brain in situ
- internal and external cerebrospinal fluid spaces are exposed
- interventricular connections and openings are exposed
- choroid plexus intact
- stand included

