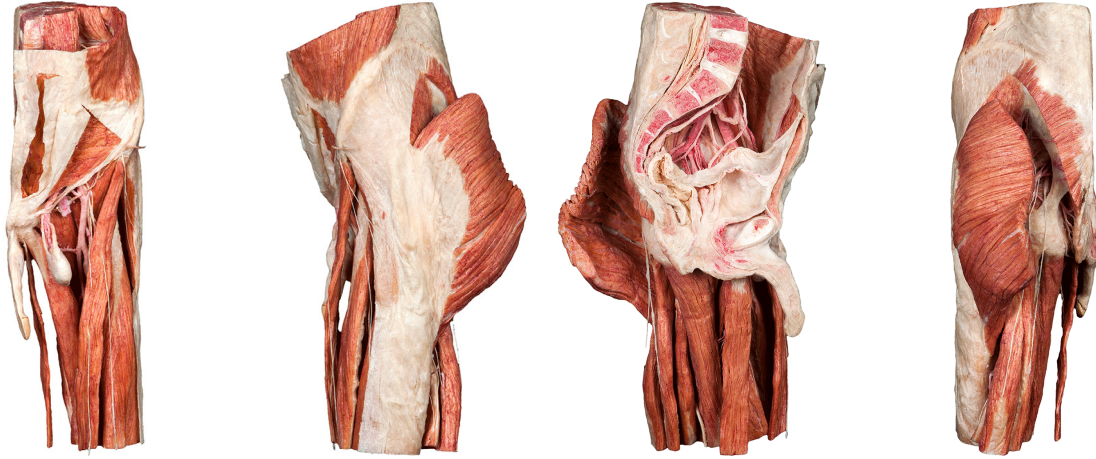


Silicone Plastinates - Pelvic Specimens - **Half Male Pelvis**



Half Male Pelvis

HP0801

- sagittal cut
- with reproductive organs and organs of the lesser pelvis in situ
- inguinal ligament, inguinal canal and femoral triangle are displayed
- dissection of the gluteal and perineal regions
- stand included

