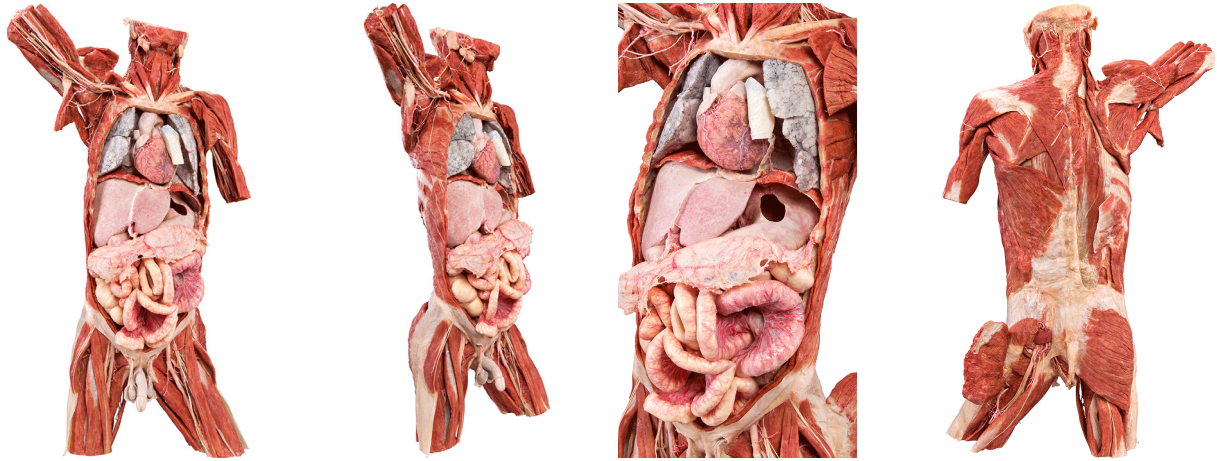




## Silicone Plastinates - Torso Specimens - **Torso**

---



### **Torso**

HP0408

- male or female
- with stumps of extremities and neck
- includes organs, muscles, main arteries and nerves
- the frontal wall of thoracic and abdominal cavities is removed to expose the internal organs in situ
- dissection shows different layers of muscles of the back and proximal parts of extremities with most arteries and nerves
- stand included

