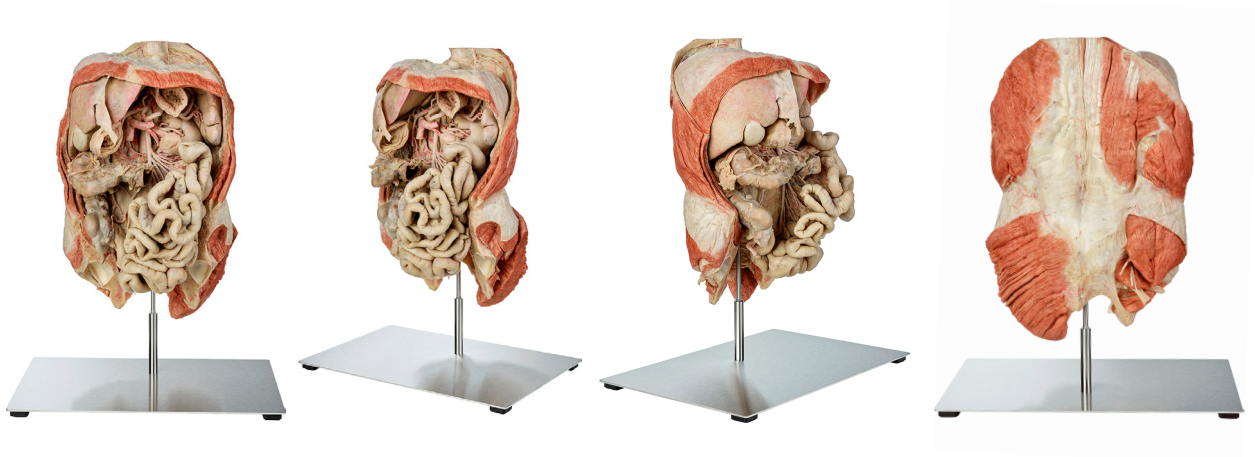




## Silicone Plastinates - Torso Specimen - **Superior Mesenteric Artery**



### **Superior Mesenteric Artery (SMA)**

HP0414

- entire small intestine with mesentery
- liver with gall bladder and structures of the hepatoduodenal ligament
- spleen, kidneys
- cecum with appendix and mesoappendix
- ascending and part of the transverse colon with mesocolon
- superior mesenteric artery with branches and arcades
- includes the posterior abdominal wall and part of pelvis for stability and topographic orientation
- includes part of the diaphragm
- stand included

