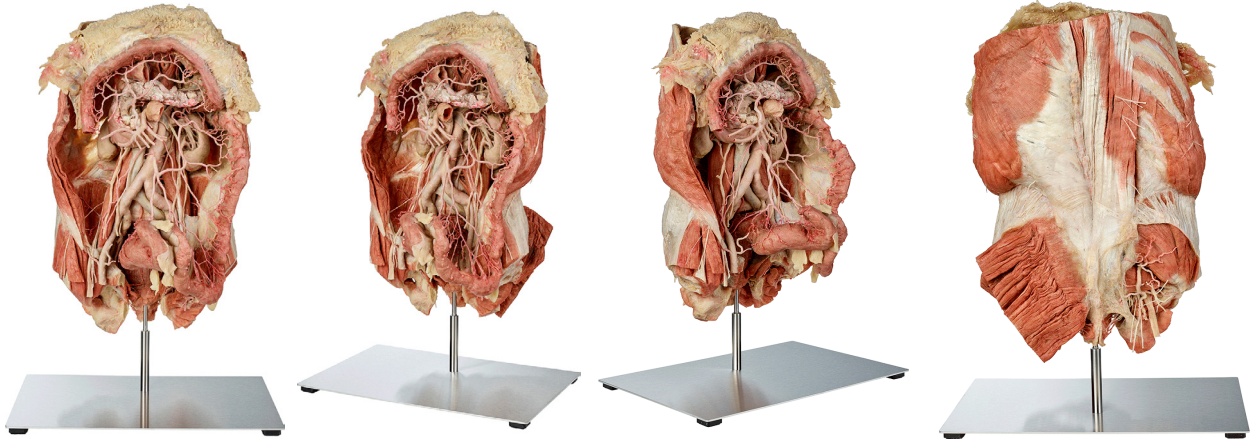




Silicone Plastinates - Torso Specimen - **Inferior Mesenteric Artery**



Inferior Mesenteric Artery

HP0415

- transverse colon
- splenic flexure
- descending colon
- sigmoid colon and rectum
- mesocolon partly retained in order to expose arcades
- aorta, IMA with branches, supplying large intestine
- right side: internal iliac artery w/ branches
- gonadal arteries
- retroperitoneal organs in situ
- includes the posterior abdominal wall and part of pelvis for stability and topographic orientation
- stand included

