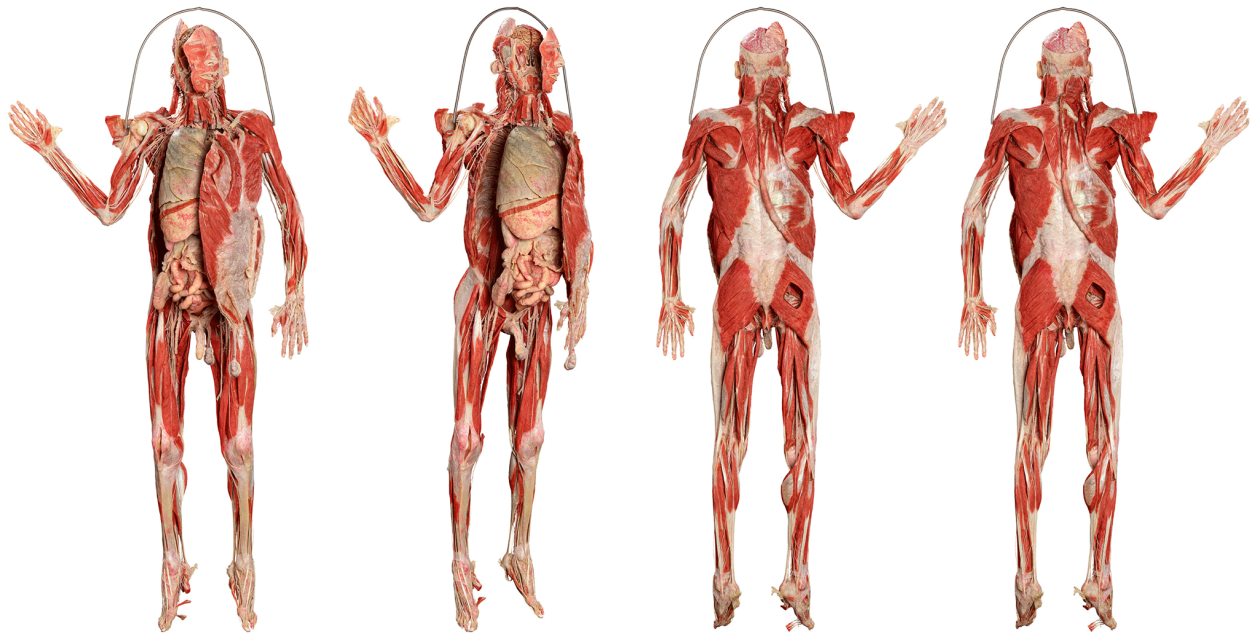


Silicone Plastinates - Whole Body - **Body No. 1**



Body No. 1

HP0101

Body No. 1 is positioned to provide easy access to all areas of the body. The body is best suited for the Gross Anatomy Curriculum because of the following features: the anatomical and topographical relationships of all body parts, regions, structures, body cavities and internal organs can be observed according to their natural position.

Head and Neck

- cranial cavity is opened to display the brain within it
- dissection of the head demonstrates the facial muscles, nerves, and blood vessels
- the frontal cut permits viewing of the oral, nasal and paranasal cavities from behind, orbital structures can be observed
- both sides display the muscles of the triangles of the neck, organs and other structures, such as main nerve bundles, and the carotid arteries with their branches

Thorax, Abdomen and Pelvis

- dissection of the trunk reveals the relationship of bones, muscles, blood vessels and nerves
- presentation of the thoracic and abdominal cavities is permitted by reflecting the thoraco-abdominal wall with a frontal cut, as if opening a door
- all organs of the thorax and abdomen are well exposed and are presented in situ, divided from the rear abdominal wall or on request can be placed separately outside of the body

Extremities

- combined superficial and deep dissection of the muscles of the extremities
- the origins and insertions of each muscle are clearly demonstrated, and the muscles themselves are separated from each other along their pathways
- dissection of main nerves and arteries which are listed in anatomical nomenclature
- stand included

